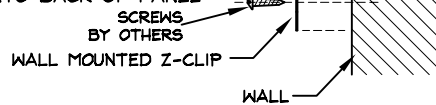


①

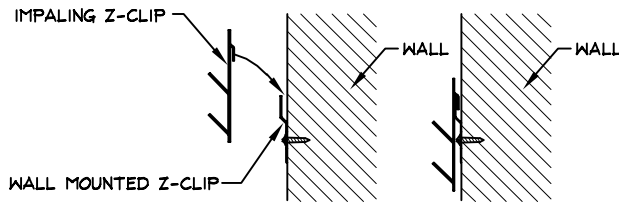
Z-CLIPS ARE SHIPPED LOOSE IN 2 PARTS - ONE FLAT PIECE TO BE SCREWED INTO THE WALL AND ONE PIECE WITH IMPALING PRONGS TO MOUNT INTO BACK OF PANEL



LOCATE Z CLIPS OR OPTIONAL Z BAR ON WALL AND SECURE WITH SCREWS APPROPRIATE FOR WALL SUBSTRATE.

②

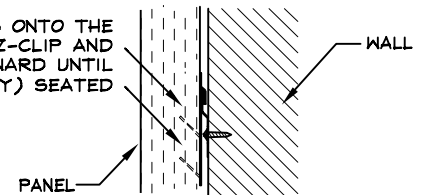
HANG IMPALING CLIP ON THE WALL-MOUNTED Z-CLIP



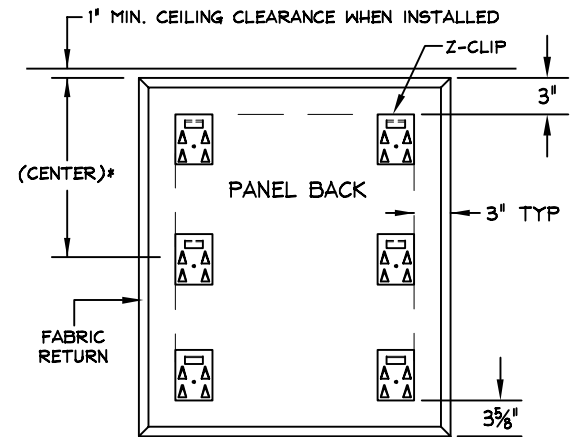
OPTION: CONSTRUCTION ADHESIVE CAN BE PLACED ON IMPALING PRONGS

③

PRESS PANELS ONTO THE IMPALING Z-CLIP AND PUSH DOWNWARD UNTIL (FIRMLY) SEATED



INSTALLED PANEL



*-PANELS OVER 5' HIGH OR WIDE REQUIRE (6) Z CLIPS. SMALLER PANELS REQUIRE (4) Z CLIPS.

PANEL MOUNTED Z-CLIP PLACEMENT